



IF YOU WANT TO GEAUX FAST GEAUX ALONE IF YOU WANT TO GEAUX FAR **GEAUX TOGETHER!**

OUR COLLECTIVE VISION

We believe in an equitable, unified early childhood system centering racial equity and ensuring families access to seamless, high-quality early child development, health, and educational services.



A Family & Provider Driven System

Families and providers are engaged and prioritized in leadership and decision-making throughout the state's early childhood system.



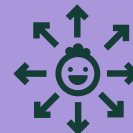
A Net That Works

All families have access to an inclusive, caring, well-coordinated network that helps them meet their basic needs and support child development.



A Healthy Start

All families receive family-centered, comprehensive, whole-person physical and mental health care from pregnancy, through the early childhood years, and beyond.



Child Care For Everyone, Everywhere

All families have equitable access to affordable high-quality early care and education that is well-funded and responsive to the needs of families, children, and the educators and providers who make it possible.



Family Friendly Workplaces

All employers in Louisiana have family-friendly policies that support employees with prioritizing the well-being of their children.

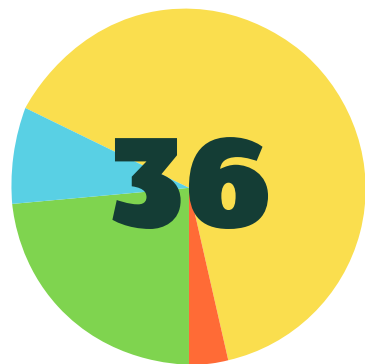


WHO IS AT THE TABLE

The Geaux Far Louisiana Steering Committee

was designed to reflect the regional, racial, and ethnic diversity of Louisiana, as well as a commitment to racial and social justice.

- 13 Louisiana Parishes Represented
- 9 Full Group Meetings
- 2 Steering Committee Retreats
- 18 Working Group Meetings

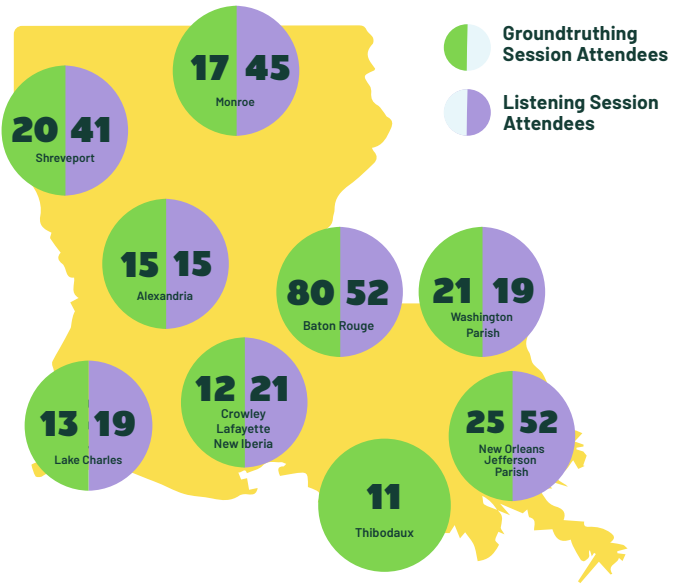


- 65% Parents
- 23% Providers
- 8% Business Owners / Leaders
- 4% Elected Officials System Leaders



JOIN THE MOVEMENT AT GEAUXFARLA.ORG

Sign Up Online for our Geaux Far Louisiana Strategic Plan



Our work was informed by a community engagement process led by the Power Coalition for Equity & Justice and included:

- 13 Listening Sessions Across Louisiana Spring 2022
- 306+ Listening Session Attendees
- 11 Groundtruthing Sessions Across Louisiana Summer 2022
- 264 Groundtruthing Session Attendees
- 510 Online Survey Participants



Libbie Sonnier, Ph.D.

Geaux Far Louisiana Steering Committee Co-Chair
Louisiana Policy Institute for Children Executive Director



Rochelle Wilcox

Geaux Far Louisiana Steering Committee Co-Chair
Wilcox Academy of Early Learning Executive Director
For Providers by Providers Co-Founder
2022 Louisiana Early Learning Leader of the Year

Design & Illustration • CARTEL Simplify | Clarify | Amplify • yescartel.com

THANK YOU TO OUR PARTNERS & FUNDERS

